

nouveau plans
(22/2/89)

CONSTRUCTIONS et RÉNOVATIONS

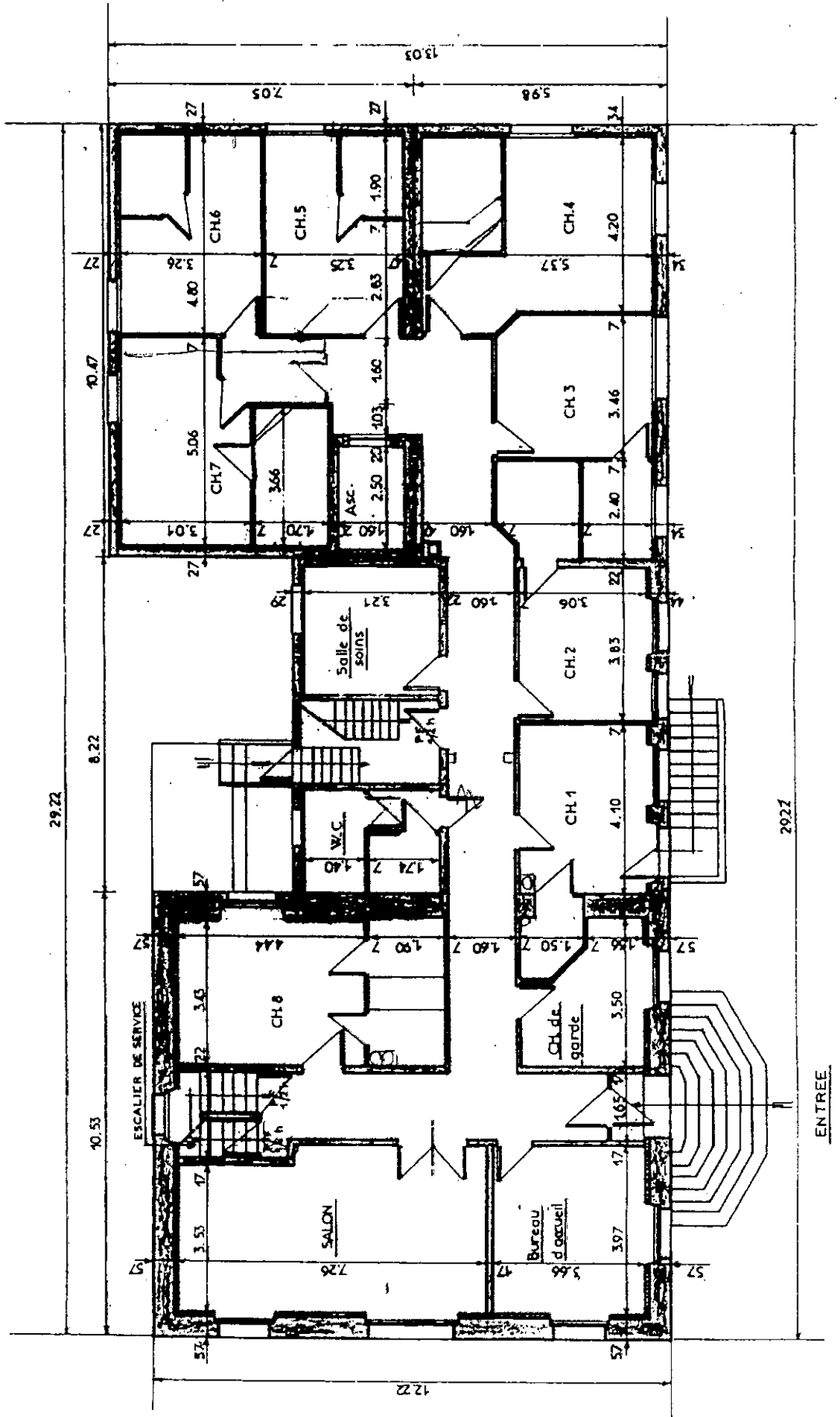
JOSÉ SALEX

Architecte

4, Place du Douze - C. 101

1500 - COCIR - 011

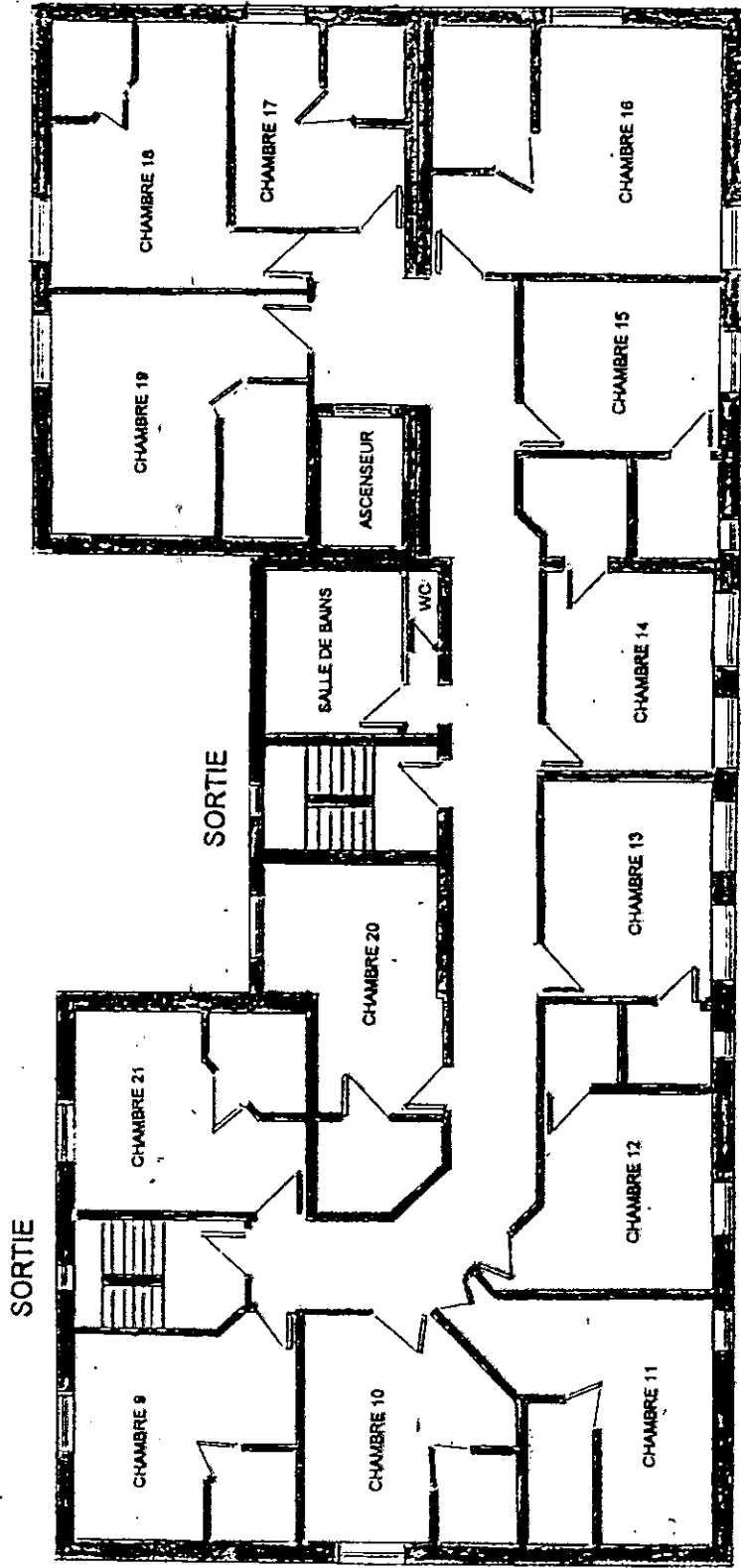
011 41 10 10



NIVEAU 1

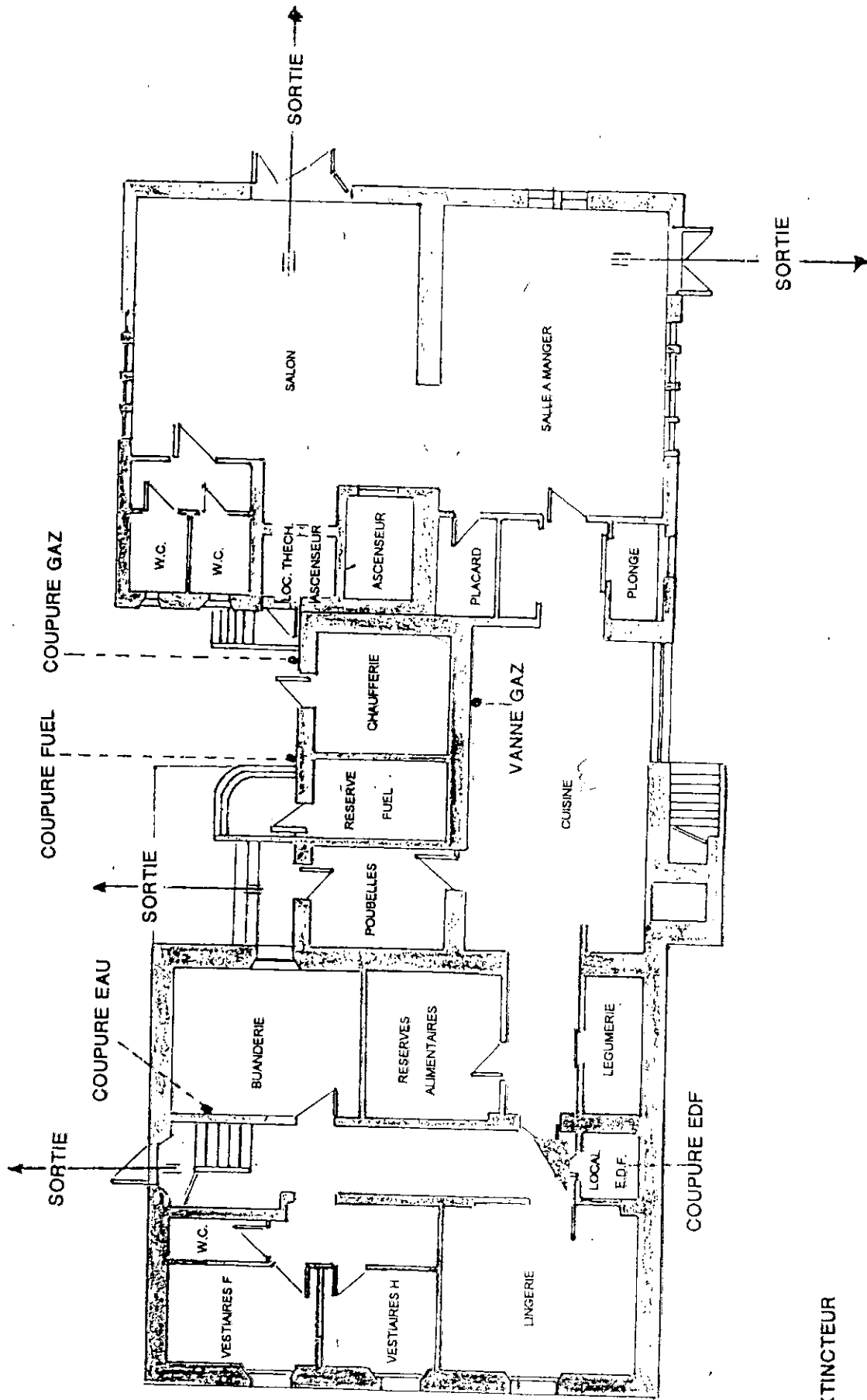
AJASSONS

NIVEAU 2



EXTINGTEUR

LES AJASSONS NIVEAU 0



EXTINCTEUR