

ASSEDIC
DES HAUTS DE FRANCE

VILLE DE SOMAIN - 59
AMENAGEMENT D'UN BUREAU DETACHE

TRACE
ARCHITECTES

20 JANVIER
1998

69 Rue du General LECLERC 59 510 HEM
03 20 45 27 60 TEL FAX 03 20 45 26 03

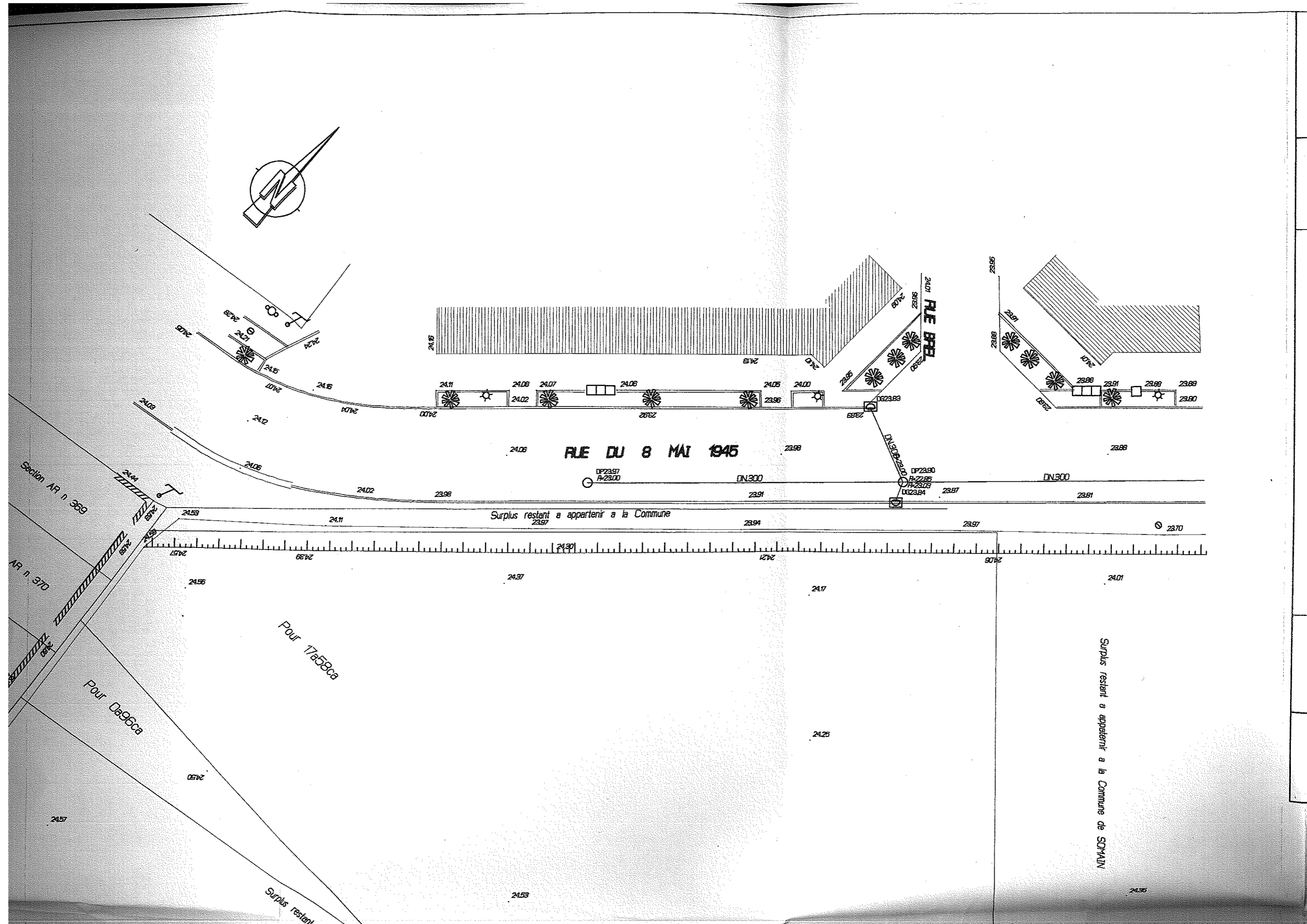
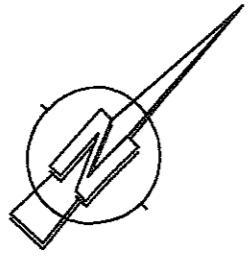
00b

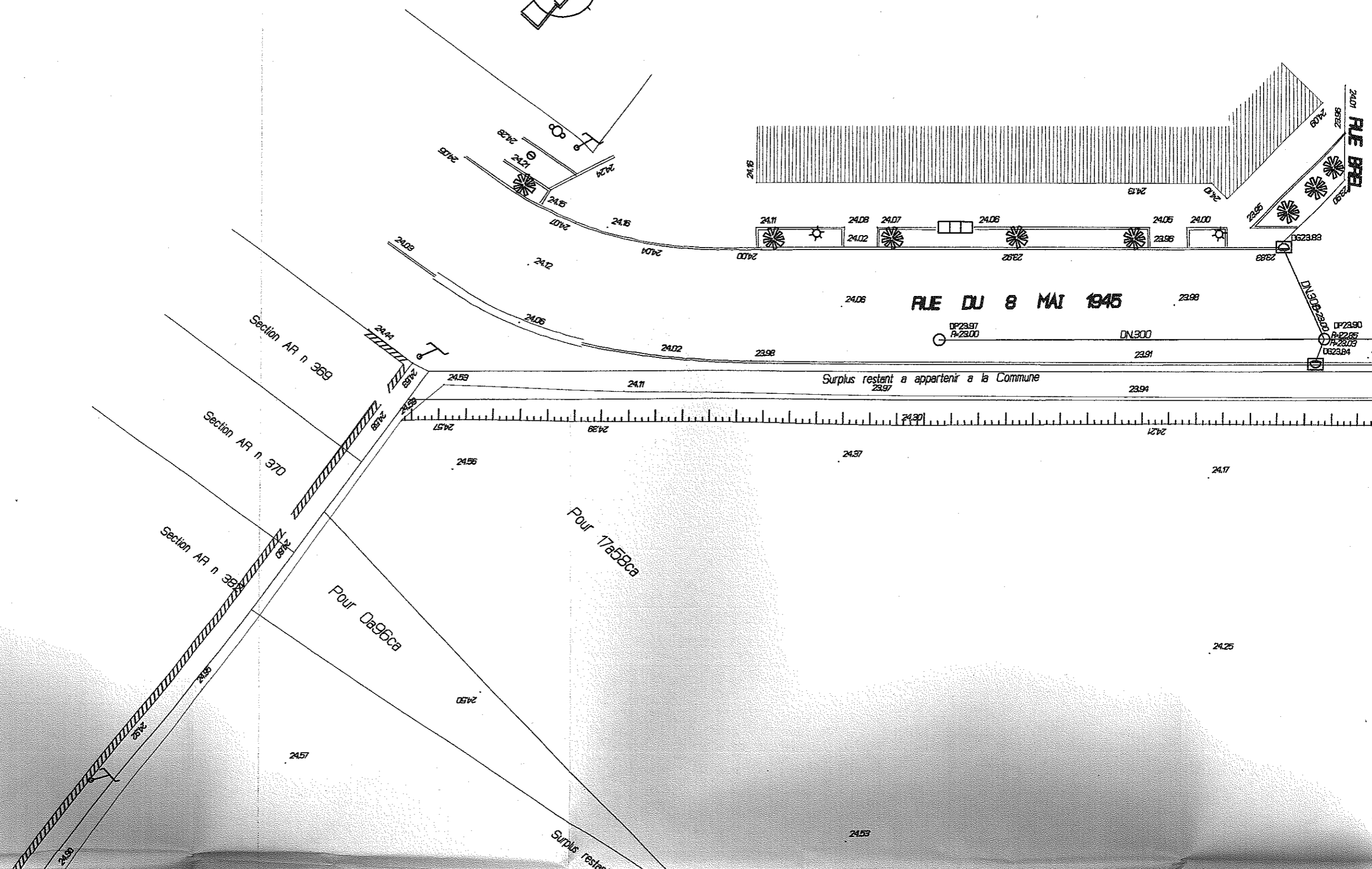
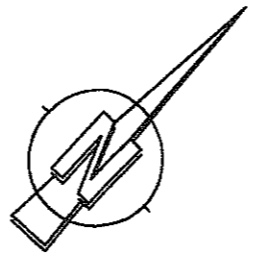
Cabinet GHESQUIERE-DIERICKX ECONOMISTE
553 avenue de la Republique.
59 700 MARCQ EN BAROEUL
Tel : 20 14 53 33 Fax : 20 55 70 18

ECH : 1/200e

DOSSIER MARCHE

PLAN GEOMETRE





appartenir a la Commune de SCHAIN

=18a54ca=

24.53

24.64

24.66

24.69

24.76

24.92

chemin

24.94

24.76

24.87

24.89

24.91

25.07

25.22

25.10

25.31

appartenir a la Commune de SDMAN

=18a54ca=

2462

2459

2464

2492

2491

2494

2469

2476

2494

2468

2476

2487

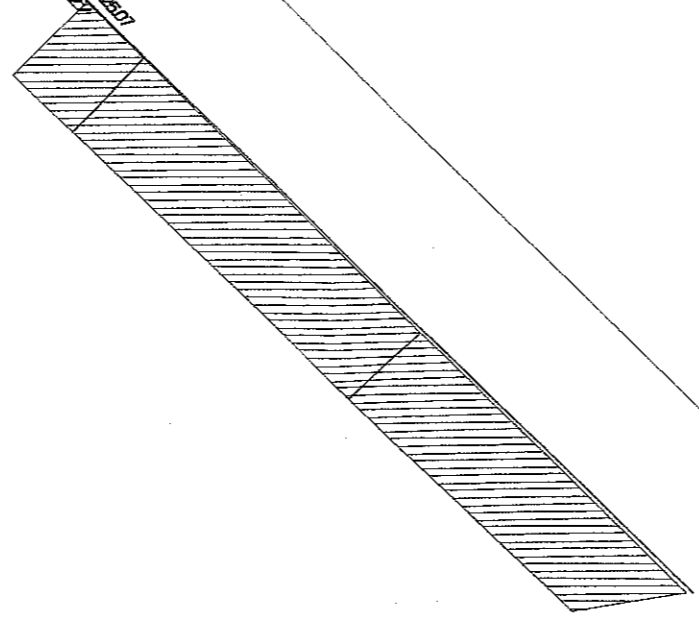
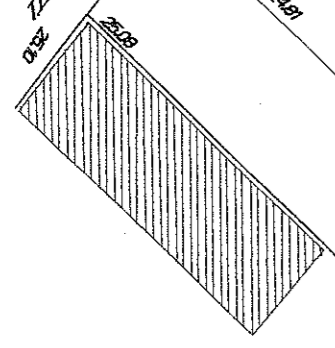
2488

2491

2507

2510

2511



ASSEDIC DES HAUTS DE FRANCE

VILLE DE SOMAIN - 59
AMENAGEMENT D'UN BUREAU DETACHE

TRACE
ARCHITECTES

30 AVRIL
1997

69 Rue du General LECLERC 59 510 HEM
03 20 45 27 60 TEL FAX 03 20 45 26 03

03

Cabinet GHESQUIERE-DIERICKX ECONOMISTE
553 avenue de la Republique.
59 700 MARCQ EN BAROEUL
Tel : 20 14 53 33 Fax : 20 55 70 18

ECH : 1/50 e

PROJET

FACADES